



**CALLAGHAN
COLLEGE**

Wallsend Campus

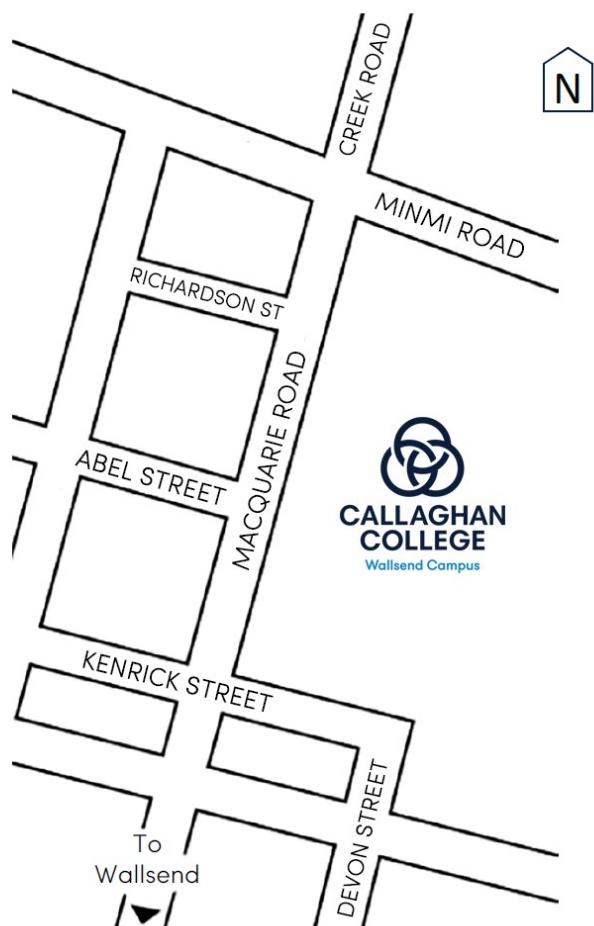


Welcome to Callaghan College Wallsend Campus

**Year 7 Orientation Handbook
for students and their families**

Collaborating to
empower learners


2024



Connect with us and our community

 80 - 82 Macquarie Street, Wallsend NSW 2287

 PO Box 427, WALLSEND NSW 2287

 02 4951 1811

 wallsend-h.school@det.nsw.edu.au

 wallsend-h.schools.nsw.gov.au/

 facebook.com/CCWallsend

 instagram.com/ccwallsend/

Principal's Welcome



Welcome to Callaghan College Wallsend Campus

At Callaghan College Wallsend Campus (CCWC) we are committed to educating our diverse community within an environment of inclusion. High expectations challenge our students to develop their potential and grow holistically through an engaging and safe learning environment.

Our school has a very committed school community, executive, teaching and administrative staff. We are a leader in the use of technology for learning, management and administration and provide outstanding academic, cultural and sporting opportunities for all students. Our staff and teachers are highly committed to excellence in teaching and developing future-focused learners to ensure students move successfully into their future career and educational pathways.

As part of our school community, students are encouraged to focus on excellence in learning, foster positive relationships and demonstrate respect and responsibility for themselves and their school.

Our school is an agile, responsive and innovative learning environment, being part of Callaghan College Wallsend Campus is a wonderful experience. Join us and see.

Paul Taylor
Principal
Callaghan College Wallsend Campus



What it means to be part of Callaghan College

Welcome to your Callaghan College learning community. Our College provides outstanding educational opportunities for Year 7 to Year 12 students across the unique learning environment of three campuses - Wallsend, Waratah and our senior campus at Jesmond. Our College motto is "Collaborating to Empower Learners" with all three campuses working together to provide you with your future learning pathway.

Every student at Callaghan is known, valued and cared for. There are a world of opportunities which await you at Callaghan and your learning experience will provide a diverse and personalised approach which will see you thrive in secondary schooling. Our expert staff are excited to welcome you and share their passion for learning with you.

We are proud to have you as a student of Callaghan College and look forward to your learning journey.

Kylee Owen
Principal
Callaghan College

Contents

Welcome to Year 7	4	School reports	25
What to wear and bring.....	5	Bell times and school terms	25
Getting to and from school.....	6	Rewards and awards	27
Starting high school	7	School values.....	28
2024 Student Leaders	7	Support for learning	29
How to read a timetable.....	8	How we communicate	30
Uniform information.....	9	What to do if.....	31
Technology @ CCWC	11	Our Canteen	32
Mobile Phones at School.....	11	Year 7 Immunisation.....	33
Year 7 Book & Equipment list....	12	School map.....	34
Key staff and contacts.....	13		
Learning at our school	15		
Getting involved	17		
Aboriginal pathways	19		
Getting into learning	20		
Get involved in sport.....	21		
Year 7 camp information.....	23		
Wellbeing programs.....	24		

PHOTO DAY

FRIDAY 2 FEBRUARY 2024



IMPORTANT: Individual photos of all students will be taken on the day. MSP Photography will send an email to all families on Wednesday 10 January 2024 with ordering and payment instructions. Ordering is via their website or download the MSP App and individual and family photos can be ordered online too. Payment can be made online, or there will be some cash envelopes available at the Administration Office.

Important dates

Thursday 1 February Day 1 for Year 7 2024 only

Friday 2 February Years 8 - 10 return for 2024

Friday 2 February School Photos - see above for more information

Early February College Swimming Carnival for competitive swimmers (includes students from Waratah and Jesmond Campuses)
(date to be advised)

Date to be advised Wallsend Campus Fun Swimming Carnival

Tuesday 22 February Year 7 Immunisation (HPV Dose 1)

Wednesday 22 May Year 7 Camp (Aussie Bush Camp) commences, returning Friday 24 May 2024 (see page 23 for more details)

Welcome to Year 7

Year Advisors Welcome

Thursday 1 February 2024 marks the beginning of your new schooling journey here at Callaghan College Wallsend Campus and as your Year Advisors, we look forward to supporting you throughout your journey from Year 7 to Year 10.

Our role will be to help you make the transition from primary to high school as enjoyable and seamless as possible. With a new school there will be new challenges too, such as “How to read a timetable”, “How to get from the oval to English class without getting lost” and the all important “How much money will be needed for canteen lunch”.

From what to do on your first day through to all the stationery you will need for each class, this handbook has been put together with all these questions and more in mind so that you will be able to rest easy and be confident about starting your time here at Wallsend Campus.

We encourage families to go through this handbook together and practice some of the new routines. Please contact the school if you have any further questions.

Welcome to Year 7, 2024!

Ms Tilse & Mr Daly



Ms Hollie Tilse
Year 7 Advisor 2024
Learning & Support Teacher
Band Assistant Coordinator



Mr Macaulay Daly
Year 7 Advisor 2024
PDHPE Teacher



YEAR ADVISOR TOP TIP

Check your emails every day!

You will receive lots of emails here at Wallsend Campus. Your teachers will be sending information to you via email and it is very important that you stay up to date!

You can find the link to your student emails on the Student Portal and the Canvas Homepage.

Ms Tilse & Mr Daly

TOP TIP

Getting ready for high school

Tips to help you thrive in your new school routine

What to wear

- Take pride in your appearance as a Wallsend Campus student (see full details about uniform requirements on pages 9 and 10)
- Dress and groom yourself neatly in your school uniform
- Make sure you have appropriate shoes for lessons, e.g. lace up joggers if you are doing PE or Sport, or fully enclosed leather upper shoes if you have any practical subjects like Technology (Mandatory) or Science

What to pack

- Read your timetable and check the Daily Notices on Student Sentral each day to help you work out what you need to pack (full details regarding technology and equipment requirements can be found on page 11 and 12)
- Pack your bag, checking you have all materials needed for your classes each day
- Bring your drink bottle, recess and lunch, or some money to purchase from the canteen (or order your canteen items through the Flexischools App - See page 32)
- Consider using a diary to record homework and other important information
- LABEL EVERYTHING, especially jumpers/jackets and hats
- Don't forget your Yondr pouch!



What to leave at home

- Chewing/bubble gum
- Permanent markers
- Soft drinks, high caffeine and energy drinks
- Aerosol deodorants (bring roll-on deodorant only)
- Items of clothing that are not uniform e.g. branded clothing
- Medication, unless registered with the Administration Office (please see them to collect the required paperwork if you need to take medication at school)



Finding your way around

- Familiarise yourself with the campus map on page 34 of this book
- Highlight on the map the locations of the classrooms on your timetable (you will receive your timetable on Day 1, keep the printed copy inside a book you bring every day, such as your student diary).
- Keep to the left in corridors and stairwells when you are making your way around the school
- If you aren't sure where to go, ask another student or staff member for help

School values and expectations

- Speak and listen to adults and peers with respect and politeness
- Respect school facilities, equipment, and the CCWC environment
- Come to class ready to learn, stay on task and work to the best of your ability
- Keep your phone and ear buds/air pods locked in your Yondr pouch.
- Work well with others (see more details about our School Values on page 28)

Getting to and from school

Make sure to always use the pedestrian crossings where available on your way to and from school.

Bus Travel: To find out which bus you should catch, check the TRIP PLANNER on the Transport NSW website - <https://transportnsw.info/trip> - make sure you select 'School bus' under the 'Refine' tab.

Ensure you swipe your Opal card when boarding and disembarking the bus. If you do not have your Opal Card, you may not be allowed to board the bus.

Opal Card: Eligible students should apply online for a Student Opal Card before the end of Term 4. Check their website www.opal.com.au for more information and the link to apply.

Bike/scooter: Bike racks are available at the front of the school, please bring your own chain and padlock.

Walking: Road safety must be practiced at all times! Please make sure you walk safely to school and only enter the school via pedestrian gates, not through a vehicle access.

Starting high school

Snapshot of what will happen on your first few days

Thursday 1 February 2024
First day for Year 7 only

We commence our school year with Year 7 starting before all other Year groups, to allow you to become more familiar with the school and meet the staff before all the other students commence. Year 10 Peer Support students will also be at school on the first day and are available to answer any questions you may have.

Please meet in the hall when the bell goes at 8.55am for a welcome assembly.

After the assembly, you will receive your timetable and you will follow your Class Teacher to your first classroom.

You will follow your timetable for Periods 2 to 5, having two 30 minute breaks during the day, one at 11.00am and one at 1.30pm. The canteen is open during both breaks. See page 25 for bell times.

You don't need to worry about getting lost because all Year 7 meet under the COLA between each period and you will be guided to your next lesson.

After Period 5 you will leave for home. Please make sure you know how you will be getting home on the day. If you are being picked up, make sure you know who is picking you up and where to meet them.

If you are catching the bus, go straight to the COLA and the teacher on Bus Duty will show you where to wait. Please make sure you know what bus number you need to catch.

Friday 2 February 2024
Years 8, 9 and 10 return to school

School photos will be taken of all students on this day. Make sure you are in full school uniform (white shirt or polo with shorts/skirt or dress, not sports uniform).

Arrive at school before 8.55am and move promptly to the COLA when the bell rings.

Please sit in the same class group and area that you were in on the first day.

You will participate in lessons as per your timetable. You will have one 30 minute break at 11.00am, the canteen will be open.

School finishes at 1.30pm and you can go home!

Remember, school finishes at 3.00pm on Monday to Thursday and 1.30pm on Fridays, so make sure you know how you are getting home on this day. Not all buses run on Fridays.

If you and your parents/carers have been through this book but still have an urgent question before Thursday 1 February, you can email the school, send us a message via our Facebook Page, or call our Administration Office between 8.30am and 3.15pm on Wednesday 31 January 2024. Please be mindful that the phones may be unattended periodically during the day due to staff training.

WEEK A or B?

At CCWC, all classes are timetabled across two weeks, which we call Week A and Week B. The first week of school in 2024 (01/02/24 - 02/02/24) will be Week B on your timetable, and the second week of school (05/02/24 - 09/02/24) will be Week A, with the third going back to Week B, and so on.

2024 Student Leaders

Welcome to Callaghan College Wallsend Campus. We are proud to be your Student Leaders in 2024.

There are plenty of opportunities for students to have fun at high school. It's a great way to meet other students from across the campus.

Feel free to come and say hi if you see us around. We are happy to answer any of your questions.



How to read your timetable

You will be provided with a timetable on the first day of school. The live timetable is available for students and families on Sentral, Edval and parents/carers can view it via the Sentral Parent Portal.

MonB	
Monday	
BS 8:30 - 8:55	
1 8:55 - 10:00	English Yr7 (7EN24W) ENG.A04 MRS Alana Koulouris
2 10:00 - 11:00	Technology Yr7 (7DT24WC2) TAS.J04 MR Trent England
L1	
3 11:30 - 12:30	Science Yr7 (7SC24W) SCI.C08 MS Mikayla Sheehan
12:30 - 13:30	MA.AU7 MR Sam Cocking
L2 13:30 - 14:00	
5 14:00 - 15:00	PE Yr7 (7PE24W) PE.NORTHCOLA MR Macaulay Daly
AS 15:00 - 15:30	

Day, date and Week A or B

BS: Before school
AS: After school

Subject

Class name, e.g.

- 7 (Year 7)
- SC (Abbreviated subject—this is Science)
- 24 (Year 2024)
- W (Class - this is class 7W)

Period number and time

Room

- SCI (This is a Science classroom)
- C08 (This classroom is in Block C, classroom 8)

Breaks
L1 & L2 are break times

Teacher name

What do I wear?

OPENING HOURS

Mon 2.30-3.30

Wed 8.15-9.15

Fri 1.00-2.00

(Not open Mondays in Term3)



Online orders:

Collect from the Uniform Shop

www.countryfeelinguniforms.com.au

country.feeling@bigpond.com

0414 651 211

UNISEX

Polo – Short sleeve	\$32	Sports Shorts	\$25
Polo – Long sleeve	\$35	Sports Pants – Long	\$43
Sports Polo – Short sleeve	\$35	Jacket – Soft shell	\$63
Sports Polo – Long sleeve	\$38	Jumper – Fleece	\$38

GIRLS/BOYS

Blouse/Shirt – Short sleeve	\$30	Dress Pants – Long	\$45
Blouse/Shirt – Long sleeve	\$33	Skirt – Tartan	\$50
Dress Shorts	\$35	Dress – Tartan	\$58

EXTRAS

Scarf/Hijab	\$20	Tie	\$22
-------------	------	-----	------

Order uniforms online now!

Country Feeling Uniforms have lots of information regarding uniform items on their website. This includes measurements so you should be able to order with confidence using only a tape measure. If for any reason the size you order is incorrect, they can arrange a size exchange for items that are in their original packaging and have not been worn. You can choose to collect your order from the shop or have them delivered to your home for a flat \$10 delivery fee.

UNIFORM SHOP OPENING HOURS 2023 / 2024

*Monday 27 Nov 4.00pm – 7.00pm

*Tuesday 28 Nov 8.45am – 9.45am

*Tuesday 28 Nov 2.00pm – 3.00pm

Wednesday 29 Nov 8.15am – 10.00am

Friday 1 Dec 1.00pm – 3.30pm

Monday 4 Dec 2.30pm – 4.30pm

Wednesday 6 Dec 8.15am – 10.00am

Friday 8 Dec 1.00pm – 3.30pm

Saturday 9 Dec 11.00am – 4.30pm

Monday 11 Dec 2.30pm – 4.30pm

Wednesday 13 Dec 8.15am – 10.00am

Friday 15 Dec 1.00pm – 3.30pm

*Parent Information Evening *Orientation Day

Tuesday 9 Jan 9.00am – 12.00pm

Thursday 11 Jan 3.00pm – 6.00pm

Saturday 13 Jan 11.00am – 2.00pm

Monday 15 Jan 3.00pm – 6.00pm

Wednesday 17 Jan 9.00am – 12.00pm

Friday 19 Jan 9.00am – 12.00pm

Tuesday 23 Jan 9.00am – 12.00pm

Thursday 25 Jan 3.00pm – 6.00pm

Saturday 27 Jan 11.00am – 2.00pm

Monday 29 Jan 2.30pm – 4.30pm

Wednesday 31 Jan 9.00am – 12.00pm

Thursday 1 Feb 8.15am – 9.15am

Friday 2 Feb 1.00pm – 3.00pm

Your uniform options

Our new school uniform was introduced in 2022. You can choose from a range of options – whether you prefer to wear shorts, long pants, or even a dress. You don't have to buy every item – we are just offering more choices to suit your preferences.

Everyday uniform items:

Button up white shirt or white polo shirt with any combination of the following (all shirts are available in short and long sleeves):

- Shorts (male/female colour ink)
- Long pants (male/female colour ink)
- Callaghan skirt (wrap around, tartan)

OR

- Callaghan dress (tartan)



Jumpers and Jackets:

- V-neck Campus fleece jumper (unisex, colour ink)
- Callaghan softshell jacket (unisex, colour ink)

Footwear:

- Black or white socks
- Black shoes (see Important Note below for information regarding footwear)

Sports uniform:

- Polo Shirt Sports – short sleeve, long sleeve (unisex, colour ink, blue detail)
- Sports shorts – (unisex, colour ink)
- Sports track pants – (unisex, colour ink with blue trim)
- Sport shoes/joggers

Optional accessories

- Wallsend Campus tie
- Callaghan scarf (for hijab or other)



IMPORTANT NOTE

Department of Education policy and Workplace Health and Safety (WHS) requirements for practical lessons in Industrial Arts and Science state that any student who is participating in activities using chemicals or equipment at school are to wear enclosed leather footwear and safety glasses. Leather footwear is also required in all cooking and sewing classes.



Technology @ CCWC

Wallsend Campus is a BYOD (Bring Your Own Device) school*, and as such, you may bring a personal learning device (e.g. laptop or similar) to school to support your learning. More information can be found on our website regarding BYOD, including the online user agreement which will need to be signed. It is important to understand that the school takes no responsibility for the device and technical support is minimal.

* BYOD is not compulsory. If a lesson requires the use of a device, students who have not brought their own will be provided with a laptop to use.



Our online systems

Please visit our website to find out all about these systems and more.

<https://wallsend-h.schools.nsw.gov.au/about-our-school/technology---ccwc.html>



Canvas for Parents: Canvas allows parents and carers to observe your learning. They can download the Canvas App from the App Store or Google Play.



Sentral Parent Portal - Parents and Carers of students can contact teachers and see live data regarding their student's attendance, reports, parent/teacher interviews etc.



Looking to purchase a BYOD? Callaghan College has partnered with HP BYOD School Program Australia for families who are looking at purchasing a device at a discounted price. Visit <https://store.hp.com/au-en/byod/callaghanbyod> (when prompted, use the code CallaghanC)

Mobile phones at school - A message for Parents/Carers

As per the Department of Education's Student Digital Devices and Online Services Policy, there is a ban on mobile phones in high schools.

To comply with this policy, we at Wallsend Campus employed the Yondr Pouch System. Each student is required to secure their phone in their personally assigned pouch when they arrive at school each morning. They will maintain possession of their phones, and will not use them until they are unlocked at the end of the school day.

EXEMPTIONS: Exemptions may apply for some students in some circumstances. For students who require a digital device or online service for medical reasons or for reasonable adjustments made as part of their **Individual Education Plan (IEP)**, use of mobile phones may be permitted.

Parents and carers can request an exemption which will be considered on a case-by-case basis and granted when required by law or at the principal's discretion.



Year 7 Book and Equipment List 2024

Listed below are the requirements for Year 7. Use the list to purchase items from a retailer of your choice. You may order a Book Pack through Stuart and Dunn (link to information below)

- Items marked with a blue dot are included in the Stuart and Dunn book pack.
- Items marked with a red dot available to purchase CCWC Administration Office (price list below).

ITEM/SUBJECT

English

2 x 128 page A4 book with margin	•
1 x 96 page standard Exercise book	•
1 x Post-it notepad	•
1 x Highlighter	

HSIE

1 x 128 page A4 book with margin	•
Protractor	•
Coloured pencils	

PDHPE

1 x 128 page standard Exercise book	•
Appropriate athletic shoes	

Language

1 x 128 page standard Exercise book	•
-------------------------------------	---

EVERY DAY SCHOOL BAG ITEMS

2 x Black pens	Highlighter
2 x Blue pens	Ruler
2 x Red pens	Eraser
2 x HB pencils	Sharpener
2 x 2B pencils	Scissors
Coloured pencils	Glue stick

AVAILABLE FROM CCWC ADMIN OFFICE

• Casio FX-82AU Plus2 Calculator	\$33.00
• Safety Glasses	\$5.00

ITEM/SUBJECT

Mathematics

1 x 128 page A4 book with margin	•
1 x Casio FX-82AU Plus2 Calculator	••

Science

2 x 128 page standard Exercise book	•
Headphones/earbuds	•
Safety Glasses	••
WHS compliant enclosed leather shoes	

Technology (Mandatory)

Safety glasses	••
2 x 2B pencils	
WHS compliant enclosed leather shoes	

WANT TO ORDER A BOOK PACK ?

- The items marked with a blue dot in the list above can be ordered online from Stuart and Dunn. For ordering details visit the Year 6 Transition page on our website:

<https://bit.ly/3Hwjyqy>

Book Packs are around \$70.00 and can be delivered to your home address for a small fee, or picked up from their Beresfield office.

All other items may be purchased from a retailer of your choice.

NOTE: If a class is not listed above, then there are no requirements other than the every day school bag items.

Key Contacts

Senior Executive



Mr Paul Taylor
Principal



Mrs Nicole Mulhearn
Deputy Principal
Year 7



Mrs Stacy Lambert
Deputy Principal
Year 8



Mr Chris Lee
Deputy Principal
Year 9



Mr Marc Unthank
Deputy Principal
Year 10

Learning, Support and Wellbeing



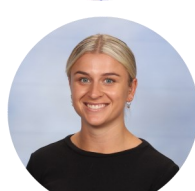
Mrs Danielle Shedden
Head Teacher Learning
& Support



Ms Kathryn O'Brien
Wellbeing Support &
HSIE Faculty



Mrs Britt Fowell
Wellbeing Support
Science Faculty



Miss Brooke O'Brien
Student Support Officer



Mrs Natalie Finn
Chaplain

Year 7 Advisors



Ms Hollie Tilse
Year 7 Advisor 2024
Learning & Support Faculty



Mr Macaulay Daly
Year 7 Advisor 2024
PDHPE Faculty

Aboriginal Learning & Engagement Centre



Mr Luke Kendall
Head Teacher Aboriginal
Learning & Engagement and
Student Leadership Coordinator



Miss Emmalee Clare
Aboriginal Learning &
Engagement Team
CAPA Faculty

Faculty Head Teachers



Mrs Simone Alchin
Head Teacher English



Mrs Sylvia Kempnich
Head Teacher
Mathematics (Rel.)



Mr Dane Hockley
Head Teacher Science



Mr Dane Le Rougetel
Head Teacher HSIE



Mr Andrew Johnson
Head Teacher PDHPE



Mr Shane Brain
Head Teacher TAS
(Tech. (Mandatory), Food
Tech, Textiles, Metalwork,
Woodwork)



Ms Rachel Maybury
Head Teacher CAPA
(Visual Art, Music, Dance,
Drama, Language)



Mr David Summerville
Head Teacher Technology

Other key staff



Mrs Elizabeth Hewitt
Head Teacher Special
Education



Mr Michael Psarris
Head Teacher Admin (Rel.)



Mr Richard McMahon
Careers Advisor
Head Teacher Vocational
Education and Secondary Studies



Mr Hagen Starrett
Representative Sports Organiser
PDHPE Faculty



Mr Macaulay Daly
School Sports Organiser
PDHPE Faculty



Miss Viv Fekete
ASPIRE Coordinator



Administration Office
Open from 8.30am until 3.15pm
Ph: 02 4951 1811
E: wallsend-h.school@det.nsw.edu.au
W: <https://wallsend-h.schools.nsw.gov.au>

Learning at our school

Core Subjects

Year 7 students will experience a range of compulsory core subjects. Some of these will be similar to subjects you experienced in primary school, while others will be completely new to you. You may not know about Technology (Mandatory). This is a hands-on practical subject and Year 7 in 2024 will have lessons in coding, engineering systems, and sewing/fabric decoration.

Year 7 subjects for all students are:

- English
- Mathematics
- Science
- HSIE
- Technology (Mandatory)
- Music (Mandatory)
- PDHPE
- Sport
- Japanese

Each subject teaches knowledge and skills that are considered essential learning for all young adults in today's world. The core subjects are determined by the NSW Education Standards Authority (NESA).

Most subjects will need certain books or pieces of equipment. Please see the list on page 12.

Students will choose elective subjects for Year 8 onwards. More detailed information about the curriculum is accessible to students and families through Canvas, our online learning platform.

Callaghan College is regarded as one of the leading schools in the Hunter Region because of the breadth of its curriculum choices from Years 8 to 12.

SELECTED YEAR 7 PROGRAMS

The following programs are for students who applied for a position when in Year 6.

Aspire Program

Callaghan College's Aspire Program is designed for students who have advanced learning capacity for their age. Students in our Aspire class will receive targeted, specialised programs designed to accelerate their learning, including extension work within class and compacted curriculum.

Creative and Performing Arts (CAPA) Program

Our Year 7 CAPA Program provides students with a differentiated curriculum that supports their creativity and active learning needs. They explore their creative interests through modified lesson structures, programs, and assessment activities, with staff collaborating to build creative opportunities across all Key Learning Areas.

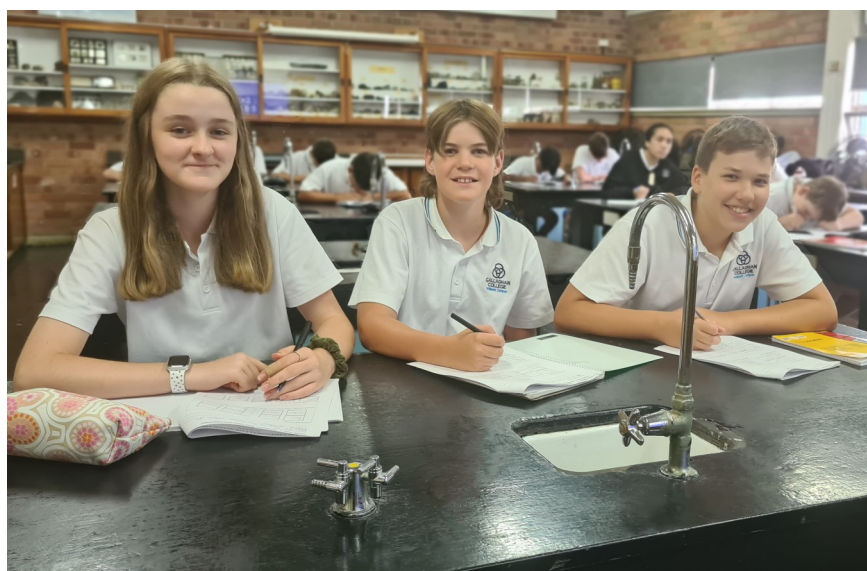
SCHOOL FEES

A message for parents and carers.

Voluntary Contribution is \$60 for the first child and \$30 for second and subsequent children.

The following Mandatory classes have fees to cover resources and equipment and are included in the Year 7 curriculum for ALL students:

- **Technology (Mandatory)**, subjects such as Woodwork, Metalwork and Food Tech.: \$40
- **Music (Mandatory)**: \$40



Special Education Unit

We have a vibrant and inclusive school community, with a number of classes especially designed for students who have a disability and require specialised support.

Our staff work with each of our students and their families to develop an Individual Education Plan (IEP), which includes academic and practical skills for everyday life.

Enrolments to our Support Unit are managed via the Department of Education.

Year 7 Curious Creations Projects

Curious Creations is a Project-based learning opportunity for Year 7 students.

You will be able to choose between around 14 different topics for your real life projects (you get to choose 4 different Curious Creations throughout the year, one per term). In 2023 students were able to choose between topics such as Basic Cookery, 3D Printing and Laser Cutting, Fitness Fanatics, Lego Masters, Special Effects Make-Up, and more.

Each project will be practical and hands-on, and you will be able to choose something that is relevant to you. You will also be able to go into the community and invite experts to help you as part of your project.

At the end of each project, you will have created something you can use or display. Everyone gets to present or exhibit their own Curious Creation.

Keep your eye out for your opportunities in 2024.

Year 7 Swim Survive

All Year 7 students participate in our Swim Survive Lifesaving Program. This valuable program is held during Term 4 where you will be at Wallsend Swimming Pool for three full days. This is part of the PDHPE Curriculum, Aquatics module.

The cost for the program is only the pool entry fee for each day (you may use your Fitness Passport or Pool Pass if you have one).



Creative Opportunities

The Creative and Performing Arts (CAPA) Faculty offers an extensive range of subjects and opportunities for all students. You will study Music and Visual Arts in Year 7 and 8, then are able to choose from Dance, Drama, Music, Photography and Digital Media and Visual Arts for your electives in Years 8, 9 and 10.

Outside of regular classes, you can choose to participate in a range of creative opportunities during breaks and before school. Watch the Daily Notices or ask the CAPA staff for more details about CAPA opportunities



Beginner Concert Band

If you are interested in learning a Concert Band instrument such as flute, clarinet, trumpet, trombone, or alto saxophone, the Beginner Concert Band might be for you? In a group you will learn how to play the instrument. Once you have been in this ensemble for a semester the aim would be to transition to Concert Band.

If you do not have an instrument, you may be able to hire or trial an instrument. Speak to the Band Teachers to find out more.



Concert Band

This band is for students who already play a concert band instrument and is interested in learning a range of repertoire in preparation to perform at different events throughout the year. This ensemble provides a positive, fun, supportive environment for every student.

Drama Ensemble

This ensemble is open to all students who are interested in Drama and acting or want to find out what Drama involves. You don't need to have any prior experience or skills. Drama ensemble is a safe and fun place to come and play games, meet friends and build confidence. We will work on skill development and progress to developing a performance for the Theatre Sports Competition.





Star Struck

Each year our students take part Star Struck Dance and Choir. Our Puppet Group is always a much loved feature of Star Struck each year. Our students created and performed in the below (and more) amazing puppets in Star Struck 2023: Ignite.



Art at Lunch

Our Art Room (A12) is open to all students during some breaks each week. You can go along and develop your artmaking skills or bring along your own artwork or class work to work on. All welcome!

Vocal Ensemble

This ensemble is for any student who enjoys singing in a group. The vocal ensemble, learn a range of repertoire and work towards different performances throughout the year. They may also perform at events such as Pulse Alive and Starstruck.

Dance Ensemble

Students with a passion for dance can join our Dance Ensemble. At our morning rehearsals, we learn and practice the choreography for various dance performances throughout the year. Performance opportunities may include Star Struck, Hunter Schools Dance Festival and Hunter Dance Camp.



Aboriginal pathways

At Callaghan College, we continue to improve the educational outcomes and wellbeing of our Aboriginal and Torres Strait Islander students, so that each student can personally excel in all aspects of their education. We ensure that all of our students feel their culture is valued and celebrated.

Kurrurka, our Learning and Engagement Centre, is located next to A Block. The centre focuses on providing support and tailored activities to meet the needs of each individual student.

Our staff develop a Personalised Learning Pathway (PLP) with each student. These plans are designed to assist students with their engagement and interest in school. We also focus on how we can assist each student's transition from primary school to our senior campus, and beyond. Students are given the opportunity to participate in our mentoring programs, which include Ngaarr Dhuwi Girls Academy, and Boys Mentoring Groups.

We actively support and value the cultural knowledge and identity of every Aboriginal and Torres Strait student across the College. There are many opportunities for students to undertake cultural leadership roles, including participation in our Junior Aboriginal Education Consultancy Group (JAECG), and the sharing of cultural knowledge to our school community through art, performance, and story-telling.

By working with the community and organisations that are culturally safe, we use a holistic approach to supporting our students. We encourage parents, carers and families to be involved in collaborative decision making for the benefit of our students' ongoing growth and achievement.

I look forward to meeting you.

Luke Kendall
Head Teacher Aboriginal Learning
and Engagement



Ngaarr Dhuwi Girls Academy

A holistic program developed by NSW AECG Inc. (Aboriginal Education Consultive Group) that supports our young Aboriginal women through their educational journey from Year 7 to Year 10. The Program nurtures culture, wellbeing, and spirit to increase self-determination and engagement to complete school. We are located in room C5A if you would like to stop by for a yarn.

Getting

The Library

Our library is a wonderful learning space full of resources and quiet break out areas. It is on the ground floor of B Block and is open before school (from 8:30am) and both breaks most days.

You will also have some of your classes in the library, including a Library Orientation Day which aims to introduce you to our Student Intranet, where you can find ebooks, printing codes, research tools, library borrowing, and the Premier's Reading Challenge. There are five separate and individually designed learning spaces including our Virtual Reality learning space.

As a vibrant learning space, you can use all of the resources in the library including laptops and computers, as well as print and digital resources (books, magazines, board games, reference resources etc) for school assignments and your own personal interests and hobbies.

The library hosts regular activities including Chess Club, Book Club, FAST tutoring support and student exhibitions. We also have competitions and regular displays which support literacy and cultural appreciation such as Harmony Week, and Book Week. We encourage student book reviews, recognise and encourage student borrowing, hold organised craft activities for special events, and help students develop key library skills in areas of research and referencing.

Our library staff are here to help with all your information needs. We are also big supporters of the NSW Premier's Reading Challenge which we actively encourage our students to get involved with at high school.

LevelUP

In 2024, all Year 7 classes will participate in our LevelUP Program. This program will focus on building the key literacy and numeracy skills that you will need to help you succeed in all your subjects. Lessons will include the explicit teaching of skills using games, puzzles and challenges.

The Hub

Callaghan College Wallsend Campus has a centre which is focussed on supporting student learning, called The Hub. The Hub is located in the Library, on the ground floor of B Block.

The Hub is staffed by Learning and Support teachers, who assist with a range of student learning needs.

The Hub offers individualised learning support and is available for students who may need a little extra help with their assignments or class work. Also if a student has been away from school for an extended period of time, they may require some assistance in catching up on school work. The Hub also supports students who are participating in the High Performing Students Program.

To access The Hub, you will need to talk to your teacher and they can make a referral for you.



Get involved in sport



Sport in Year 7

Year 7 sport is integrated into your timetable for two periods each fortnight. You will get a chance to improve your skills in a number of different sports and physical activities.

You will also get to do more sport and physical activity in the core subject, PDHPE (Personal development, health and physical education).

PDHPE explores issues that have an impact on our health, as well as the safety and wellbeing of yourself and others – now and in the future. During PDHPE classes, you will experience a combination of theory and practical, and get a chance to participate in physical activity to help you improve your movement skills with confidence.

What is your sport 'house'?

Students are placed in their sporting house by surname (see our house mascots above).

Other sporting opportunities

We have a very active sports program that runs throughout the year. Students can get involved in team sports including rugby league, basketball, AFL, soccer, lawn bowls, netball, touch football, volleyball, cage soccer, dodge ball, paddle tennis and more.

Wallsend Campus has a proud reputation for students representing the school at zone, regional and state carnivals and competitions.

Throughout the year, you can get involved in lunch time competitions, CHS Knockout competitions and gala days.

We also have Campus Athletics and Swimming carnivals, as well as College wide competitive swimming carnival and cross country competition.

WALLSEND CAMPUS FITNESS PASSPORT

Earn stars for every participation in a PDHPE or sport event in 2024. Students who have achieved enough stars will be rewarded at the end of the year!





Year 7 Camp 2024



2024 YEAR 7 CAMP

WHERE: Aussie Bush Camp

WHEN: Wednesday 22 to Friday 24 May 2024

COST: To be confirmed, but we expect the cost to be around \$400 per student.

Families will be issued with the full information pack for Year 7 Camp 2024 in Term 1. There you will find details including cost, due dates, what to pack and the agenda.

Wellbeing Programs

Wallsend Campus is proud of our positive school culture with student wellbeing is an important part of everything we do. Our school values are backed by a range of programs that aim to provide a safe and supportive learning and social environment for all our students.

Year Advisors

Your Year Advisors, Ms Tilse and Mr Daly, provide guidance and promote wellbeing of all students in Year 7. They are the first contact for you or your parents/carers if you have any concerns or you want to find out what additional support might be available for your specific needs at school.

They also organise events, assemblies and excursions for your Year group.

Learning Support

We have a team of teachers that are dedicated to providing additional learning support to students who may benefit from having some help outside the classroom. Your parents can contact your Year Advisor or Head Teacher Learning and Support to find out more about how to access these services.

Social/Emotional Wellbeing Team

Our Student Support Officer, School Chaplain and School Counsellor can connect you to programs or services within or outside the school to support the 5 areas of your sense of wellbeing and belonging: social, emotional, physical, psychological and developmental. The team provides one-on-one support, group programs and can support you to make external agency referrals.

You can find Wellbeing Team upstairs in A Block, next to Classroom A2.

Supportive Environment

To maintain a safe and supportive environment for everyone, we have very clear processes for managing any harassment, discrimination, violence or bullying at school. For more information about our expectations and policies about student behaviour, check our website [Supporting our Students > Student Health and Safety](#).

Inclusive culture

We celebrate a rich and diverse culture at Wallsend Campus. Many students have families with connections from across the world and as a school community, we recognise the value and richness of multiculturalism.

We also provide one-on-one and group support for students where English is an additional language/dialect (EAL/D). Specialist teachers help students to improve their written and spoken English skills in parallel with their class subjects.

The school does not tolerate any form of racism and we have an Anti-Racism Community Officer (ARCO) and supporting policies.

Year 7 Peer Support

Our Peer Support Program sees Year 10 Student Leaders helping to navigate your way around high school. Your Peer Support leader will provide you with a friendly, familiar face around campus and will introduce you to the daily routines of high school life.

BREAKFAST CLUB

Our Breakfast Club runs every day in classroom A1 from 8.15am. All students are welcome to come and have some breakfast before class. It's also a great way to start the school day and make friends.



School reports

School Reports

School reports are produced twice per year, at the end of each semester. Your report will list your achievement, effort and behaviour for each subject.

The Assessment of Achievement is based on the following grades:

- A Outstanding
- B High
- C Sound
- D Basic
- E Limited

All reports are emailed directly to your parent/carer and are also available to view and/or download at any time on the Sentral Parent Portal.

Parent/Teacher Evenings

School reports provide an overview of your progress and are available for you and your parents prior to Parent Teacher Interviews. These interviews are an opportunity for your parents/carers to discuss your progress in person. You will be advised when bookings are open and can be made via the Sentral Parent Portal.

Parents/carers are also most welcome to make an appointment with your teacher/s if they need to discuss anything with them by contacting the Administration Office to arrange an interview.

Bell times and school terms

All roll marking at Wallsend Campus is completed online and will be marked at the start of each period. Important information is also communicated to students during roll marking so you need to make sure to get to class on time.

BELL TIMES				
	MON/TUES/THURS	WEDNESDAY	FRIDAY	
PERIOD 1	8.55am	8.55am	CURIOUS CREATIONS Year 7	SPORT Years 8-10
PERIOD 2	10.00am	10.00am - Assembly 10.55am		
BREAK 1	11.00am (30 min)	11.15am (30 min)	11.00am (30min)	
PERIOD 3	11.30am	11.45am	11.30am	
PERIOD 4	12.30pm	12.40pm	12.30pm	
BREAK 2	1.30pm (30 min)	1.35pm (30 min)	Early finish: 1.30pm	
PERIOD 5	2.00pm	2.05pm		
FINISH	3.00pm	3.00pm		

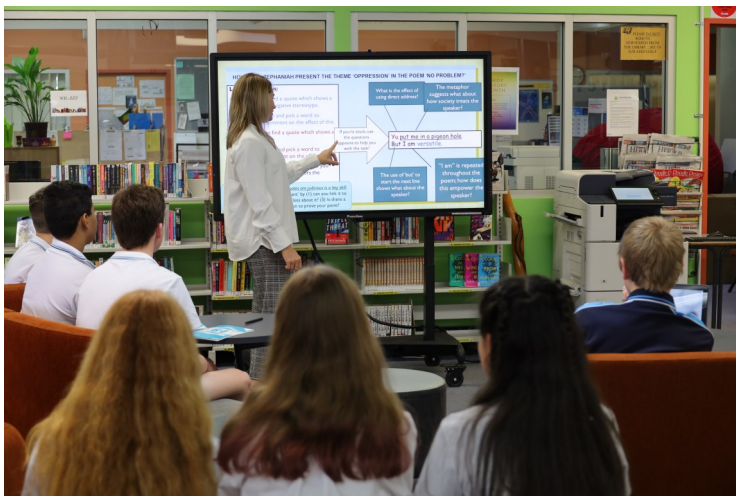
2024 TERM DATES FOR YEAR 7	
TERM 1	Thursday 1 February (Years 8 to 10 return 2/2/24) to Friday 12 April 2024
TERM 2	Tuesday 30 April - Friday 5 July 2024
TERM 3	Tuesday 23 July - Friday 27 September 2024
TERM 4	Monday 14 October - Thursday 19 December 2024

EVERY MINUTE COUNTS...

When your child misses just...	that equals...	which is...	and therefore, from Kindy to Year 12, that is...
10 minutes a day	50 minutes of learning each week	Nearly 1½ weeks per year	Nearly ½ a year of school
20 minutes a day	1 hour and 40 minutes of learning each week	Nearly 2½ weeks per year	Nearly a year of school
½ hour a day	½ a day of learning a week	4 weeks a year	Nearly 1 ½ years of learning
1 hour each day	1 whole day of learning each week	8 weeks per year or nearly a term a year.	Over 2 ½ years of learning

Your child's best learning time is at the beginning of the day...

**You need to be at school by 8.55am.
DON'T BE LATE!**



Rewards and awards

WEEKLY ASSEMBLY AWARDS

We celebrate students throughout the year who consistently demonstrate our school values of Respect, Responsibility, Excellence and Relationships.

WE ALL VALUE EDUCATION (WAVE):

Twice per term, students are given a score against the WAVE criteria by their classroom teachers on a 1 to 5 scale. The score is based on student engagement, respect, personal responsibility, school uniform and attendance, with 5 being the highest possible score for each class. Students who achieve an average score of 4 and above go into the draw and one student from each year is randomly chosen to win a \$5.00 canteen voucher at our fortnightly whole school assembly.

YEAR ADVISOR AWARDS: At our fortnightly Year Assemblies, Year Advisors choose one or two students to be rewarded for excellence. This can be for many reasons, for example, working hard, citizenship or engagement in class.

ATTENDANCE AWARDS: Twice per term, the students whose attendance is 90% or above go into a draw to win a prize. The first name drawn out wins a \$50 Teen Voucher, with another two students each winning a \$10 Canteen Voucher.

SEMESTER AWARDS

FIRST IN CLASS AWARDS: Every student has a chance to be recognised in our First in Class Awards. These are given out each semester to the student who comes first in every class, of every subject, in every year group right through from Year 7 to Year 10.

First in Class awards for Semester 2 are awarded at the annual Celebration of Learning assemblies.

ANNUAL AWARDS

CELEBRATION OF LEARNING WEEK: Award Ceremonies are held at the end of Term 4 at a special assembly for each Year Group.

Academic, leadership, citizenship, cultural and encouragement awards are given at these assemblies.

ANNUAL SPORTS PRESENTATION: We hold a Sports Presentation each year for our amazing sports persons. Students are recognised for their achievements in individual and team sports, age champions, lunchtime competition winners and more.



School values

RESPECT

- Our students appreciate the rights of others to learn in a safe and caring environment; we acknowledge that our differences are what makes us all special.
- Our staff provide a learning environment that caters for all types of learning. We establish positive relationships and celebrate diversity.
- We encourage our families to be key players in their child's education.



RESPONSIBILITY

- Our students strive for personal best in all endeavours and are prepared to commit to the goal of maximising personal outcomes.
- Our staff provide a world class learning environment that embraces collaboration, communication, creativity and critical thinking.
- We work collaboratively with the community to ensure that students through Years 7 - 10 are guided and encouraged to best meet their educational and personal goals.



EXCELLENCE

- We encourage all students to take advantage of every opportunity to extend their learning and to pursue their personal best in all areas.
- Our teachers utilise best practice in all aspects of their preparation for teaching, learning, reporting and evaluating.
- Our community can utilise all avenues of the school for positive partnerships, open communication and good management.



Support for learning

Introducing our Learning and Support Team

Our Learning and Support Team works closely with teachers, students, parents and outside professionals to cater for the individual support needs of students.

Services provided by our Learning and Support Team include:

- Assessment of student learning needs
- Targeted intervention programs e.g. literacy, numeracy, and organisational skills
- In-class support
- The development of Individual Education Plans (IEP's)
- Emotional and behaviour intervention and support groups
- Advice for accessing internal and external professional support services
- Determining appropriate adjustments, including the modification of curriculum, assessment, exams and appropriate extension programs
- Determining appropriate extension programs for high achieving students
- Transition programs
- Professional development sessions to enhance teacher skills and understanding.

WHAT ABOUT HOMEWORK?

All students are expected to complete some work at home. You may have a set task or assessment task to complete or if not, you should revise what class work has been done that day.

You and your parents /carers can see what homework tasks have been set in CANVAS.

FAST Homework Centre

The Wallsend Campus "Free After School Tutoring" (FAST) Centre will be operating again in 2024 each Tuesday afternoon from 3.00pm to 4.00pm. If you need assistance with any school learning activities, homework or assessment tasks, just come along to the FAST centre for an after school snack and study session.

SUPPORTING YOUR CHILD – TIPS FOR PARENTS

Mrs Danielle Shedden, Head Teacher Learning and Support

Wallsend Campus is fully inclusive and every student is supported to achieve their greatest potential. Learning progression in high school differs vastly from primary school and it is normal for new Year 7 students to feel a little overwhelmed initially as they adjust to these changes.

If your child is struggling or has concerns about their learning we encourage you to address these concerns early. Start with a conversation with your child – find out what they find challenging and what would make a difference for them.

We also encourage you to contact your child's classroom teachers and/or Year Advisors for support. Our Learning and Support Team are here to help for more complex issues, such as learning or wellbeing difficulties, diagnosis and/or disability.

If you would like to know more, or to provide additional information to assist us in meeting your child's individual learning and support needs, please contact us for an appointment.

How we communicate

Our school's communication channels to parents and carers

Office hours: 8.30am until 3.15pm on school days
Phone: 02 4951 1811
Email: wallsend-h.school@det.nsw.edu.au

Email - IMPORTANT!

It is vital that we have on file an email address that your parents check regularly.

Most of our communication is digital. Permission notes, absence notifications, newsletters, school reports, school fees, notification of award ceremonies, and more.

Make sure to keep your information current so you don't miss any important messages.

Sentral Parent Portal

Your parents can view your timetable, attendance and the daily notices from the school. This is also where to view and print out school reports and where to book Parent Teacher Interviews.

See our website to find more information on how to register and login to the Sentral Parent Portal.

Canvas

Canvas, our online learning platform, allows you and your parents 24/7 access to your learning, with lessons, resources, homework and revision, assessment tasks and schedules. There is also a calendar and you can personalise your notifications for announcements or assessment task updates via email.

School Bytes Parent Portal

Here your parents can check the details of any Permission Note, submit the consent form online and keep track of your activities.

They can also pay for school fees and excursions via a secure link (also found at the top of our website). If you have siblings at this or another school, they can view all their children in one portal.

What's Happening?

Follow us on Facebook and Instagram pages where we share lots of updates and snapshots of the activities and achievements of our students.

We also email a newsletter each term to all families, so make sure that your email details are correct, you don't want to miss it!

Message from the Administration Office: Change of Details

Don't forget to notify us if you have made any changes to your contact details, including phone number, address, email address etc.

Remember, if you change your address, we are required by the Department of Education to sight a copy of your proof of residence, e.g. Rates Notice, utility bill, lease or mortgage documents etc. Please bring one of these documents to the Administration Office. Please note, we are not allowed to accept a drivers licence as proof of address.

A Change of Details form can be found on our website or collected from the Administration Office.

Absent from school? Your parent/carer can send us an SMS

0429 55 01 88

Parents/carers can send an SMS message to explain your absence from school. Plus, we send an SMS to the family of all students that are absent each day (at around 10.30am) that they can reply to with a reason.

They can also email us, send a note with you to school, or call us on 4951 1811.

Please remember that absences must be explained within 7 days of the absence.

Website

wallsend-h.schools.nsw.gov.au

Our website can be used as a starting point when you want to access Sentral or Canvas as all the links are on the home page.

There are links for students to Canvas, Sentral and the Student Portal. Links also for parent to access Canvas, Sentral and School Bytes.

We have lots of information on our website which we are always updating.

What to do if...

I am late to school: If you arrive late to school you will need a signed and dated note from your parent or carer, explaining why you are late. Hand this note into the student counter of the Administration Office who will issue you with a Late Slip. You will then need to provide this Late Slip to your class teacher.

You can see information regarding the impact absences have on your learning on page 26.

I am late for class: If you are delayed in a previous class by a teacher, ask for a note with a reason for your lateness, and give this note to your next teacher as soon as you get there. Unexplained lateness to class can result in disciplinary action so be mindful to be punctual to class at all times.

I am very early to school: Please wait under the main COLA until staff come on duty to supervise students from 8.30am each day.

I feel sick at school: If you are feeling unwell in class, your teacher will issue you with a note so that you can see the First Aid Officer, located at the Student Counter in the Administration Office (during breaks you can just go directly to the Student Counter). They will assess you, and provide treatment if appropriate. If necessary, your parent/carer will be phoned by the school to collect you (do not call or text home yourself if you are feeling unwell).

For students with a medical pass, please show the teacher and ask to go to the First Aid Officer if you are feeling unwell.

I lost my timetable: Log onto the Sentral Student Portal and print your timetable. You can also print a copy in the Library. Library staff are happy to assist you with this. There are computers set up in the student office and library where you can log in to check your timetable.

I am not in correct uniform: Bring a note from home explaining why, and take it to your Deputy Principal when you get to school.

Eligible families can apply for Student Assistance to help with uniform purchases. Please contact our Administration Office for more details.

I am lost: All members of staff are happy to help you or you can ask other students. Alternatively, you can make your way to the student counter in the Administration Office and ask for assistance.

I need to leave school early: Bring a note from your parent/carer explaining the time you will be collected and why you need to leave early. Collect your 'Leave Early Slip' from the Administration Office and keep it with you until you need to show the slip to your class teacher who will allow you to leave class.

If your parent or carer needs to pick you up unexpectedly, they need to report to the Administration Office first (*Parents, please phone the Office before you arrive, to give as much notice as possible, so we can notify your child that they will be collected*).

I lost something at school: You are responsible for all your belongings at high school. If you do lose something, check if it has been handed in at the Administration Office. We recommend that students do not bring large sums of money or valuables to school.

I lost my textbook/English novel/library book: You may be loaned textbooks/English novels, or borrow a library book from the school that will need to be returned. If you lose or damage a loaned textbook, English novel, or library book, the school will expect you to pay for its replacement.

I am having trouble with another student: Please talk to one of your teachers or your Year Advisor who will help you work out what to do next.

I want to go to the toilet during class: We encourage you to use the bathroom during Break 1 (Recess) or Break 2 (Lunch). Your teacher will give you a note and allow you to go if it is an emergency only.

I can't do sport due to illness or injury: Bring a note from your parent/carer explaining the reason why you cannot do sport and present to your PDHPE or sport teacher at the start of the lesson.

Our Canteen

Our school canteen has lots of great and healthy options before school, and during breaks. Watch the boards for daily specials.

Just a reminder that you are unable to make purchases at the canteen during classroom (unless you have special permission from your teacher).

Breakfast: The canteen opens at 8.30am in the morning each day and is open until the bell goes at 8.55am. You can buy from the yummy breakfast menu or place an order for lunch or recess (this makes it quicker to pick up at break time).

Here is an example of items that are available to purchase before school:

- Bacon and Egg Roll
- Fruit Salad
- Cheese Toastie
- Ham and Cheese Toastie
- Ham and Cheese Croissant

Recess (Break 1): The bell goes after Period 2 for Recess at 11.00am and you can visit the canteen until the bell goes for Period 3 at 11.30am. (Recess is between 11.15am and 11.45am on Wednesdays due to Assembly). If you have ordered your recess via Flexischools or at the canteen before school you will line up in the area designated for pre-orders.

Lunch (Break 2): After Period 4, the bell goes at 1.30pm for lunch (1.35pm on Wednesdays due to Assembly). On Fridays, due to our early finish at 1.30pm, the canteen does not open at 1.30pm.

Remember that you are unable to buy from the canteen during class time, only during breaks. There is a wide range of hot and cold food available. Make sure you take advantage of the Flexischools App or order before school to make sure you get your preference.

Choose from:

- Assorted salads, sandwiches and wraps, such as Chicken Caesar Salad, Garden Salad and Pesto Pasta Salad.
- Homemade Burgers, including beef, chicken and veggie with lots of options available (including Gluten Free).
- 100% beef and reduced fat Sausage Rolls and Pies.
- Beef and Vegetarian Nachos.
- Daily specials from Monday to Thursday, check the specials board for details - items such as chicken and gravy rolls, spring rolls, nachos and devil chicken wings available.

Our menu is seasonal with lots of home made and healthy options, see the full menu in the Flexischools App.

Snacks and drinks: We have a wide range of snacks and drinks ready to purchase over the counter (or via the App) and available during Break 1 or 2, such as:

- Veggie Snack Packs
- Muffins
- Fruit salad
- Water, juices and milks
- And lots more.



Skip the queues and order your breakfast, recess or lunch via the Flexischools App. (orders close at 9.00am each day).

Visit the Flexischools website to find out more about this canteen ordering system

<https://www.flexischools.com.au/parents>



Year 7 Immunisation

A message from NSW Health



Health
Hunter New England
Local Health District

Year 7 vaccinations: Free for all Year 7 students Thursday 22 February

Dear Parent/Guardian

A team of specially trained registered nurses will be visiting our school to offer free vaccinations against serious preventable diseases

Vaccines include:

1. Human Papillomavirus (HPV) vaccine (1 dose)
2. Diphtheria-Tetanus-Pertussis (whooping cough) (dTpa) vaccine (1 dose)

What do you need to do?

- ✓ Parents/carers provide consent ONLINE for school vaccination, replacing the previous paper-based consent forms.
- ✓ To provide online consent, parents/carers will need:
 - Service NSW log-in details
 - Medicare card for the parent/carer and child
- ✓ Benefits of online consent include:
 - Easy update of student details
 - SMS notification when vaccines are given
 - Fast upload of vaccination records to the Australian Immunisation Register.

On the day of the vaccination clinic:

- ✓ Ensure your child has eaten breakfast the morning of the clinic
- ✓ Ensure your child is wearing clothing that enables the upper arm to be exposed

What if your child misses a vaccine?

You won't need to do anything. Every effort will be made to catch-up missed vaccines at other clinics at your child's school during the year or the following year when they are in Year 8.

More questions?

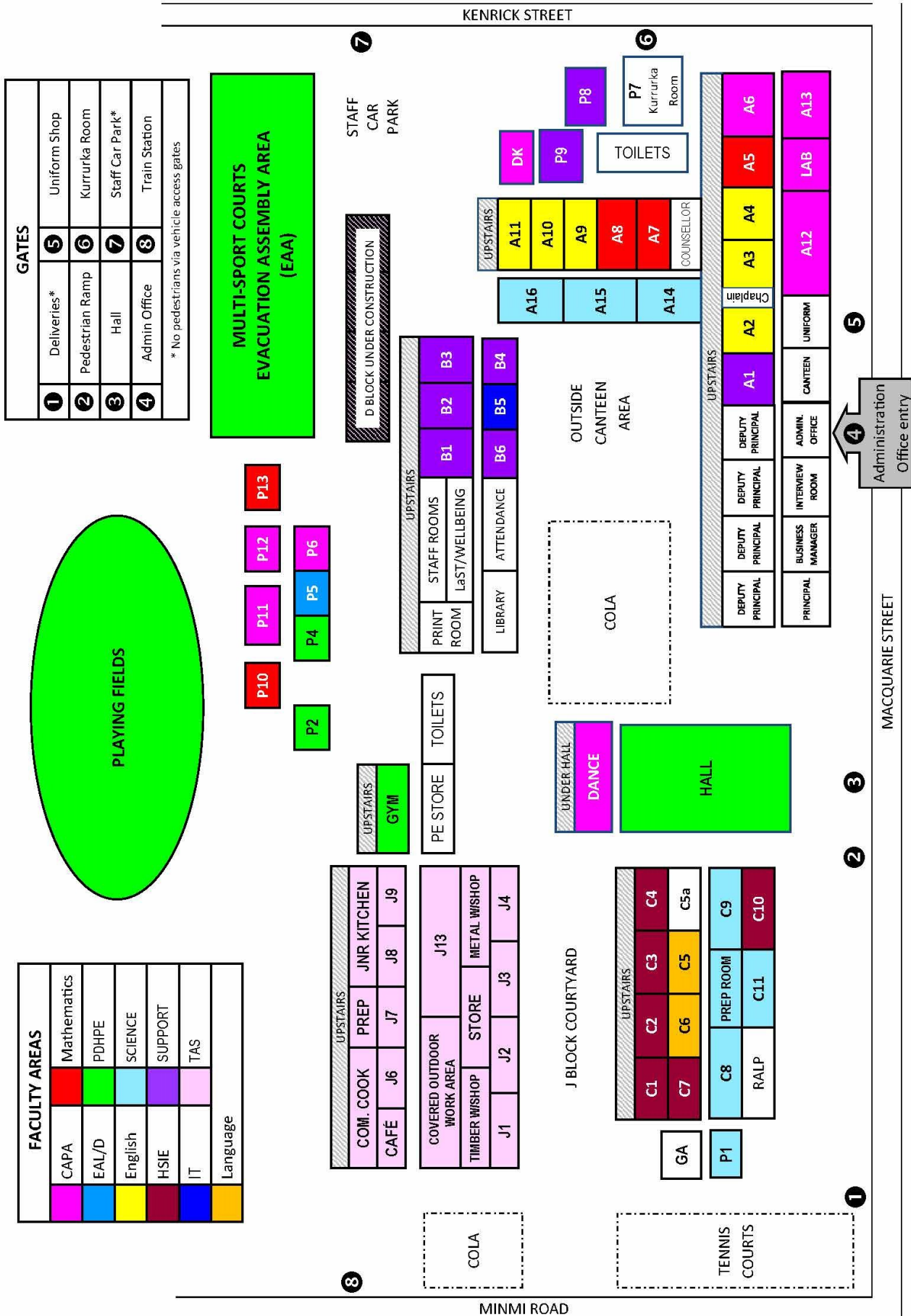
Please contact Hunter New England Local Health District, Immunisation Unit

Phone: 02 4924 6477

Email: hnelhd-phimmunisation@health.nsw.gov.au

Website: <http://www.health.nsw.gov.au/immunisation/Pages/schoolvaccination.aspx>

School map (not to scale)



FACULTY AREAS	
CAPA	Mathematics
EAL/D	PDHPE
English	SCIENCE
HSIE	SUPPORT
IT	TAS
Language	

GATES	
1	Deliveries*
2	Pedestrian Ramp
3	Hall
4	Admin Office
5	Uniform Shop
6	Kurrurka Room
7	Staff Car Park*
8	Train Station

* No pedestrians via vehicle access gates

**MULTI-SPORT COURTS
EVACUATION ASSEMBLY AREA (EAA)**

PLAYING FIELDS

UPSTAIRS	
COM. COOK	JNR KITCHEN
CAFÉ	J6 J7 J8 J9
COVERED OUTDOOR WORK AREA	
TIMBER W/SHOP	STORE
J1 J2 J3	J4

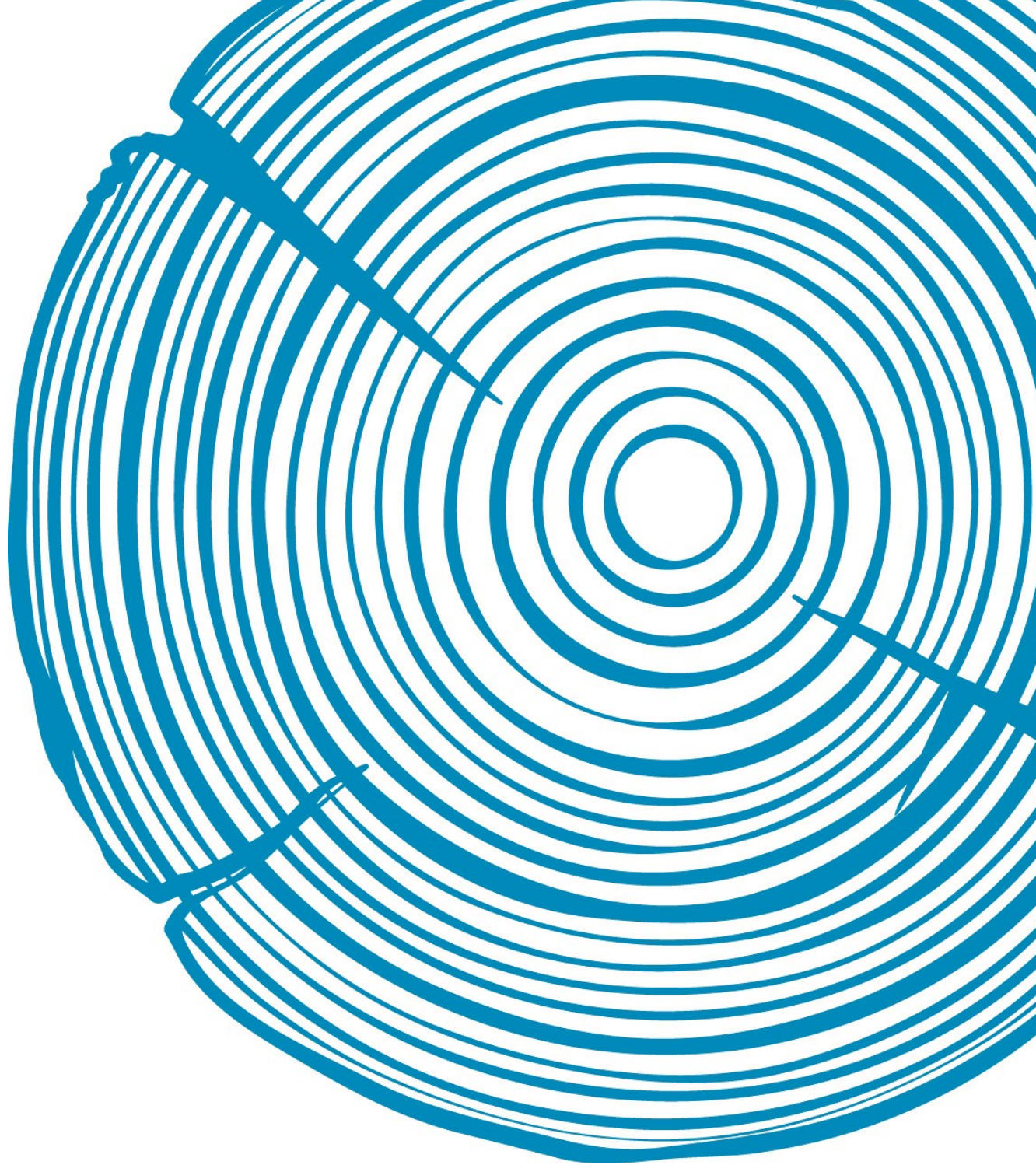
P2	P4	P5	P6
P10	P11	P12	P13

UPSTAIRS	
PRINT ROOM	STAFF ROOMS
LIBRARY	ATTENDANCE
A16	A15
A11	A10
A9	A8
A7	A6
COUNSELLOR	
UPSTAIRS	
A1	A2
A3	A4
A5	A12
A13	A14

UPSTAIRS	
C1	C2
C3	C4
C5	C5a
C6	C7
C8	C9
C10	C11

GA	P1
RALP	PREP ROOM
LAB	UNIFORM
ADMIN. OFFICE	INTERVIEW ROOM
ADMIN. OFFICE	CANTEEN

Administration Office entry



**CALLAGHAN
COLLEGE**

Wallsend Campus

**Collaborating to
empower learners**

Macquarie Street
Wallsend NSW 2287

02 4951 1811

wallsend-h.schools.nsw.gov.au